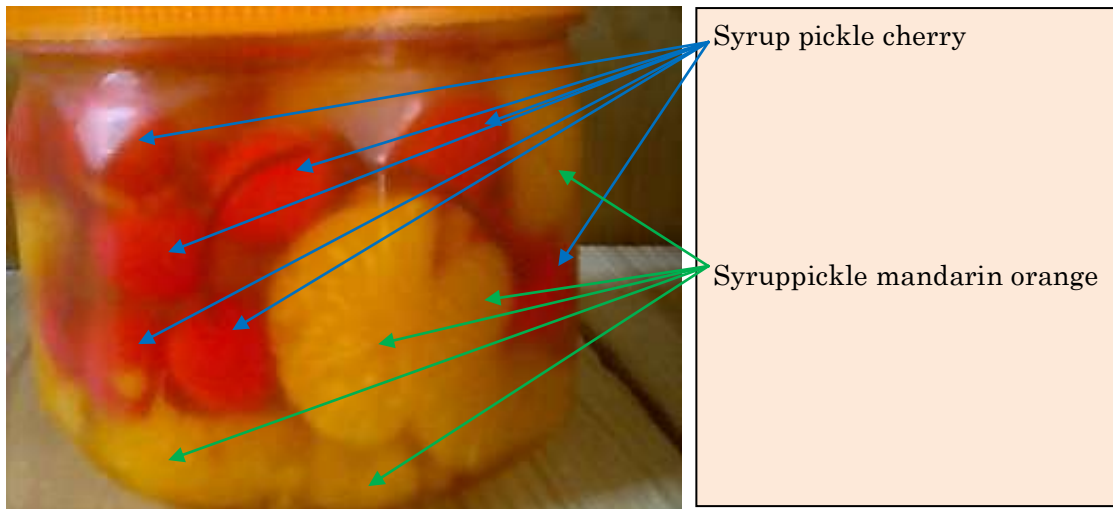


## Quality texture of syrup pickle fruit seen in ultrasound

March 22, 2010 go to <http://syuzou.awk.jp/>

Ultrasound laboratory issue Shuzo Arakaki

The photograph moved the syrup pickle of the cherry and the mandarin orange to a plastic container.



The fruit which in container is delicious Judge match. Let's use the ultrasound

The medical treatment ultrasound scans because it uses the medical treatment ultrasound device and look well, please this time. It observes it by supersonic wave 10MHz.



It cherry is observed with 10MHz.

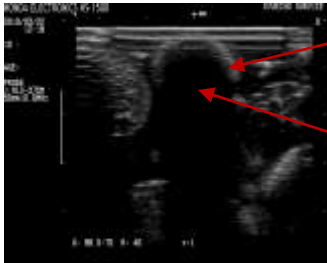


It is an ultrasound imagery. The shadow is admitted in the central portion being observed by internal uniform echogenic.

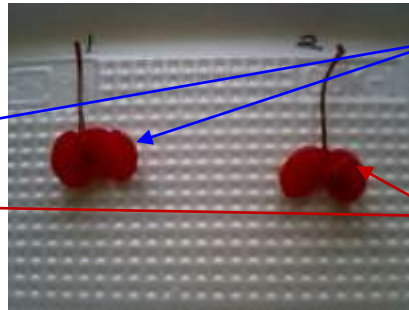
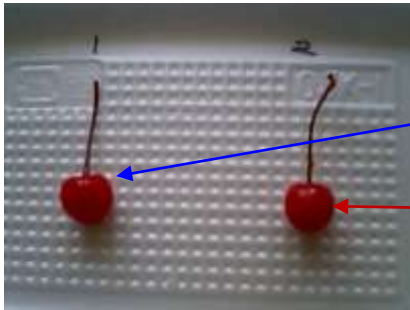
## Another cherry is observed



Another cherry is observed with 10MHz.



It is a description only of the outline on the surface, the rear side or more of outline 1mm of the surface guessed to be a cherry from shape pulls the shadow, and the inside cannot be observed.

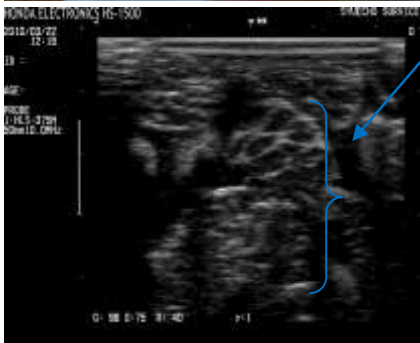


①Cherry crack  
side photograph  
The texture is  
sweet and soft  
The taste that  
is not the  
water. ..cherry..  
hard

## Shortaxisobservationofmandarinorange

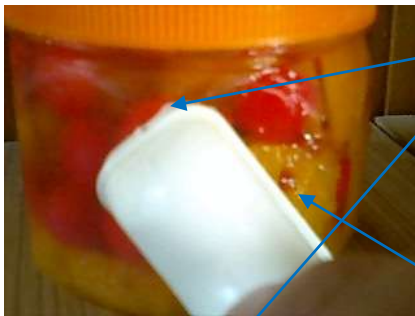


The mandarin orange is observed with 10MHz



Observed ultrasound picture in the bunch can be firmly observed.

## Axis of length of mandarin orange observation



Cherry state

The cherry is the one having soaked it in syrup well.



State of mandarin orange

As for the mandarin orange, the slight shape crumble is seen.

Ultrasonic nondestructive testing done by half this play. It is useful for material pic up that puts the match in the patissier contest. Do at the probability of 30 percent this time?It drank and the cherry was observed.